

2021-2022

ENSEMBLE HANDBOOK



esyjo EMPIRE STATE
YOUTH ORCHESTRA

ESYO relies on the most up-to-date medical information available and governmental guidance to make informed policy decisions about our COVID-19 protocols and vaccination requirements.

Due to the ongoing evolution of the pandemic, ESYO's policies are subject to change.

To protect the health and safety of ESYO members, all ESYO employees and volunteers are required to be fully vaccinated. Additionally, the following measures will be taken:

- **Vaccine Requirement:** Members ages 12 and older are required to be fully vaccinated with a COVID-19 vaccine (Pfizer-BioNTech, Moderna, or Johnson & Johnson) prior to their first rehearsal. Members will be able to upload proof of vaccination at the time of registration.
- **Mask Requirement:** All persons are required to be masked while indoors at any ESYO sponsored rehearsal or event.
- Wind/Brass players are required to use instrument PPE and Musicians' Masks.
- Members will be seated at appropriate distances during rehearsals.
- ESYO will abide by the safety policies set by the performance venues where ESYO concerts take place; such policies may include mandatory vaccinations for persons 12 and older.
- **Parents/Caregivers must provide proof of vaccination in order to remain indoors during ESYO sponsored rehearsals or events.** Parents/caregivers who are not able to provide proof of vaccination may enter the rehearsal or event venue only to drop off or to pick up their child and must exit immediately afterward. Masks are mandatory.

Questions?

Please contact Rebecca Calos, Executive Director at rcalos@esy.org.

WELCOME TO THE 2021-2022 ESYO SEASON!

We are looking forward to an outstanding year of making beautiful music together at in-person rehearsals and performances around the Capital Region. We invite you to dive in, challenge yourself, make new friends, and enjoy some "serious fun" with your fellow musicians.

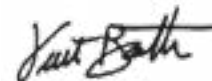
The purpose of this handbook is to outline programs, policies, expectations, and offerings for the 2021-2022 season. The success of our programs demands a high level of commitment from each student and their family. Please take time to read this handbook and locate important information about your membership in ESYO.

If you have any questions not answered in this handbook, please contact your orchestra or ensemble manager for assistance. You may also email Sue Lascoe, Operations Director, at slascoe@esy.org.

Here's to a great season for making music with friends!



Rebecca Calos
Executive Director



Kurt Bratten
Co-Chair



Patty Michaelson
Co-Chair

COVID-19 & Vaccination Policy	02
Overview	05
The Team	07
Programs	10
Member Expectations & Policies	13
Contacts & Communication	20
Rehearsal Schedules	24
Additional Information for ESYO Member Families	25

ESYO has provided outstanding music training and performance opportunities for young musicians from across New York’s Capital Region and Western New England since 1979. Beginning with a single orchestra nearly forty years ago, ESYO has grown to include 13 performing ensembles, a youth chorale, and a free, community-based music program called CHIME. ESYO players are afforded exceptional learning opportunities with elite musicians, renowned conductors and passionate Teaching Artists. ESYO’s performing ensembles engage in over 600 hours of rehearsal per season and, combined, offer more than 30 public performances each year. ESYO has received three prestigious awards for its adventurous programming from the American Society of Composers, Artists, and Publishers (ASCAP) and has had 8 international tours, including participation in the World Association for Symphonic Band Ensembles Festival in Hungary in 2018, and a tour to Asia sparked by an invitation to perform at the 2012 World Expo in South Korea.

MISSION

ESYO challenges and inspires young people to achieve excellence through music in a rigorous learning environment leading to high-level performance opportunities.

VISION

ESYO aspires to create tangible and lasting benefits for our community. Together we strive to:

- Facilitate skill development for the 21st century
- Nourish a new generation of leaders in the arts and society
- Inspire lifelong stewardship of our shared musical treasures
- Create a sustainable model to expand access to music education
- Promote the use of music as an agent of social change

SHARED VALUES

Our shared values drive our mission and help us realize our vision. We have a passion for:

- Musical excellence as a joyful pursuit and a pathway to personal growth
- Access to enriched musical education and experiences
- Service to youth as our primary customers
- Collaboration among our musicians and ensembles, with our supporting schools and community partners
- Community as an opportunity to engage, to grow and to give back

ESYO is committed to creating a culture of inclusivity in all our spaces - whether we are in a rehearsal, performance, or online. In April 2020, ESYO established a Diversity, Equity, and Inclusion task force made up of young musicians, staff, and board members to ignite our commitment and journey towards ensuring ESYO is a place where all voices are heard, everyone feels welcomed, and our diversity is celebrated. We are committed to providing a safe and supportive environment regardless of ability, gender identity, or expression, sexual orientation, race, ethnicity, cultural background, national origin, citizenship, faith, ideology, or income.

Throughout the season, ESYO members and stakeholders will be presented with opportunities to engage in conversations and workshops around our commitment to inclusivity.

To learn more or to contact the chairperson of the Diversity, Equity, and Inclusion Task Force, please reach out to dei@esy.org. All communication is confidential.

2021-2022 BOARD OF DIRECTORS

Kurt Bratten
Co-Chair
Patty Michaelson
Co-Chair
Omar Williams
Vice Chair

Caitlin Mochrie
Treasurer
Mary Clyne
Secretary
Robert Altman
Brian Axford

Robert Bengraff
Deidre Hill Butler
Heather Chan
Henk Elzenga
James Haertel
Stefon Harris

Andrew LaCoppola
Kara Lais
Barry Richman
Brian Sacawa
Chris Shiley
Elizabeth Silver

2021-2022 ADMINISTRATIVE STAFF



Rebecca Calos
Executive Director



Lisa Stulmaker
Finance Director



Sue Lascoe
*Operations Director
and Repertory
Orchestra Manager*



Andrea Restrepo
*Operations Assistant,
Symphony Orchestra
& String Orchestra
Manager, and Librarian*



**Anne-Marie
Gorman Doyle**
Development Director



Zoë Auerbach
*CHIME and
Young Leaders
Program Manager*



David Bebe
Education Director



Justin Cook
*Marketing &
Publications Manager*



Sam Herman
*Administrative Assistant
and Brand Manager*

2021-2022 CONDUCTING STAFF



David Beck
*ESYO Repertory
Orchestra*



Joseph Gumper
String Orchestra



Leo Milman
Concertino Strings



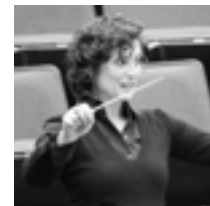
Richard Albagli
*Youth Percussion
Ensemble*



Mark Foster
*Youth Percussion
Ensemble*



John Antonio
*Chamber
Percussion
Ensemble*



Genoeffe Vitale
*Chamber
Percussion
Ensemble and
Concertino
Percussion*



**Robert
Hansbrough**
Wind Orchestra



Peter Bellino
*Youth Jazz
Ensemble*



Keith Pray
*Repertory Jazz
Ensemble*



Julie Taylor
*Concertino Wind
Choir*



Scott Hopkins
*Concertino Brass
Choir*

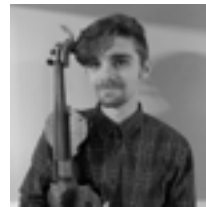


Rae Jean Teeter
*Melodies Of
Christmas
Chorale*

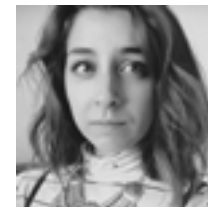
2021-2022 CHIME STAFF



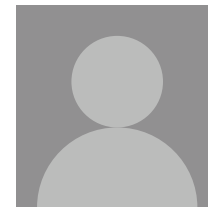
Lenore Aldi-Snow
Teaching Artist



**Connor
Armbruster**
Teaching Artist



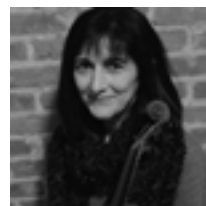
Jessica Bowen
Teaching Artist



Brian Brancato
Teaching Artist



Cathy Gatta
Teaching Artist



**Teresa Gatta
Norton**
Teaching Artist



Richard Jimenez
Teaching Artist



Matthew Johnson
Teaching Artist



Bridie Schnore
Teaching Artist



Nick Smith
Teaching Artist



Susan Wheeler
Teaching Artist



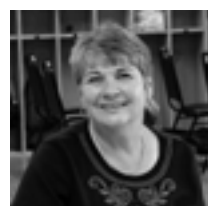
**Monica
Wilson-Roach**
Teaching Artist



Nyasia Darby
Site Manager



Lekina Green
Site Manager



Lin Polster
Site Manager



PROGRAMS

PERFORMING ENSEMBLES

ESYO's progressive program supports students in elementary through high school, growing with them as they expand their musical and personal capabilities. To learn more about each ensemble, visit esyo.org/programs/orchestras-ensembles.

Area	Progression of Ensemble Participation by Skill Level
Strings	
Woodwind and Brass	
Percussion	
Jazz	
Voice	

ESYO CHIME

CHIME (Creating Harmony Inspiring Musical Excellence) is ESYO's instrumental music education program that operates in coordination with the Schenectady, Troy, and Albany City School Districts. The CHIME program places children on a path to musical excellence and cultivates skills needed to succeed in all areas of life, including collaboration, creativity, and critical thinking. While instrumental education offerings, grade levels served, and hours vary by location, the conviction that pursuing musical excellence is transformational, and that such an endeavor should be available to all, is the driving force at all CHIME sites. CHIME currently operates at Van Corlaer Elementary School and Proctors in Schenectady and the Oakwood Community Center in Troy. Additionally, free, weekly private lessons are provided for students at Hackett and Myers Middle Schools in Albany. To learn more about CHIME, visit us online at esyo.org/chime or email chime@esyo.org.

YOUNG LEADERS

The Young Leader program provides members the opportunity to engage in leadership training and gain hands-on experience in the music world. Young Leaders have the chance to assist with our programs, collaborate with peers on community projects, engage with mentors in Arts fields, and participate in leadership workshops.

To be eligible for the Young Leaders program, a student must be in high school, and be a member in good standing of an ESYO performing ensemble or of the CHIME program. A Young Leader must commit to the program for the entire season, and is expected to participate an average of 8-10 hours per month in cohort meetings, workshops, volunteer activities, special events, projects, administrative tasks, and mentor meetings.

To learn more about the ESYO Young Leader program, visit esyo.org/youngleaders or email youngleader@esyo.org.

SUPPLEMENTAL INSTRUCTION

All members of our performing ensembles and CHIME are invited to participate in supplemental instruction. Opportunities such as clinics, workshops, and Master Classes are offered at all levels and are designed to correlate with experiences in the rehearsal or practice room and support each member's musical growth. Information and registration for supplemental programming is shared via Google Classroom, email, and newsletters.

CONCERTO COMPETITION (SYMPHONY ORCHESTRA ONLY)

Symphony Orchestra members in good standing are eligible to participate in the annual Lois Lyman Concerto Competition. The winner is invited to be the guest soloist at a Symphony Orchestra concert, and the second place winner is invited, at the discretion of the Repertory Orchestra Conductor, to perform at a Repertory Concert. Entries to the competition must be approved by the Music Director prior to registering online. Additional information can be found at esyo.org/programs/concerto-competition.

The Concerto Competition is named in memory of area violinist, teacher, and ESYO Co-Founder, Lois Lyman. Past winners can be found at esyo.org/programs/concerto-competition.

MELODIES OF CHRISTMAS

Melodies of Christmas is an annual, televised holiday show featuring ESYO's Symphony Orchestra and Youth Chorale. Produced by CBS 6/Albany and sponsored by Freihofer's and Price Chopper to benefit the pediatric oncology program at Albany Medical Center, the four Melodies concerts attract a total audience of over 10,000 each year. The show is taped for broadcast on CBS 6/Albany (WRGB) on Christmas Eve and Christmas Day. As of December 2014, ESYO has helped raise more than \$9 million for the program.

High School singers in grades 10-12 are eligible to audition for the Melodies Chorale. Members of the Symphony Orchestra are not eligible, as their rehearsals take place at the same time as the Chorale. Melodies Chorale auditions are held in late September, and rehearsals take place Wednesday evenings from October through the performances in mid-December.

MEMBER EXPECTATIONS & POLICIES

This section outlines the expectations of ESYO student musicians and policies that ensure a safe learning environment and make it possible for our ensembles to perform at an exceptional level.

A COMMITMENT TO MUSICAL EXCELLENCE

As a member of ESYO, your personal progress and success as a musician and the collective progress and success of your ensemble depend upon your FULL participation. By joining ESYO, you make a commitment not only to yourself but also to each of your fellow musicians to do the following:

Be present for all ensemble rehearsals or CHIME classes (in accordance with the attendance policy for your program). The challenging music and intensity of work in our rehearsals and classes means that each minute is valuable and important.

Read all emails from your Conductor and Operations Staff. Respond to the emails in a timely manner if asked!

Practice your ensemble music on a regular basis between rehearsals and achieve mastery of it well before a performance. The primary purpose of rehearsals is for musicians to grow together as an ensemble and to develop a clear, consistent, and cohesive approach to the music. Learn parts before rehearsal, not during rehearsal!

Study with a private teacher. Private study is essential for ensuring the continuing development of your musical skills and for meeting the technical challenges of your ensemble music. Be sure to share important solos or problematic passages with your private teacher so they can help you with these areas. CHIME members will receive individualized support during program hours. If you need help finding a private teacher, please visit our [online directory](#).

Participate in other music activities, especially the school programs that are available to you. One rehearsal per week with us is not enough time to develop your ear, ensemble skills, and musicianship to the fullest. School programs offer not only opportunities for students to develop in these areas but also to develop their leadership skills. You are expected to participate in your school music program if one is available.

Be a good colleague and role model by being **on time, attentive, respectful**, and having **“serious fun”!**

PRINCIPAL PLAYERS RESPONSIBILITIES

Musicians seated as principal players in their ensemble are expected to take on additional responsibilities while in that role. These responsibilities include:

- Setting a good example of preparation, promptness, attentiveness, musicianship, and leadership for the section;
- Noting trouble spots in the music and bringing that to the attention of sectional coaches;
- Supporting the rehearsal discipline of the section;
- Assisting the conductor in realizing interpretive directions;
- Ensuring that all members of the section have a unified understanding of the music, making sure that bowings, breathings, fingerings, articulations, and phrasings match;
- Responsible for communicating with the other section leaders and the conductor;
- Percussion Principal Players: Assign parts and coordinate instruments for rehearsals and concerts.

ATTENDANCE POLICY

Start Time. You are expected to be in your seat and ready to play at least 10 minutes before the downbeat for rehearsals, warm-ups, and concerts. If your rehearsal starts at 7:00pm and you are “on time,” then you are in your seat and ready to go at 6:50pm! You are tardy if you arrive at the same time that rehearsal is starting.

Commitment. We are committed to providing you the opportunity to rehearse and perform with a full ensemble. This, in turn, requires your commitment to prepare, practice, and be present. If you are absent, or not prepared, the entire ensemble is adversely impacted.

Conflicts. Please notify your manager or conductor immediately via email, or using the online Absence Form on Google Classroom, of any potential or actual conflicts prior to the first rehearsal and throughout the season.

Tardiness. Arriving late to rehearsal is disruptive and disrespectful to your ensemble. Please notify your manager or conductor via email or text as soon as you are aware of a conflict that will cause you to be late to a rehearsal. Habitual tardiness will not be tolerated, and will result in probation.

Absence Policy for Symphony Orchestra. TWO excused absences are allowed per concert period. NO absences are allowed in the two weeks prior to the concert. NO absences are allowed from mandatory rehearsals, dress rehearsals, warm-ups or concerts. This includes college visitations, proms, balls or other social events.

Absence Policy for all other Ensembles. TWO excused absences are allowed per concert period. ONE excused absence is allowed during the three weeks prior to the concert. NO absences are allowed from mandatory rehearsals, dress rehearsals, warm-ups or concerts. This includes college visits, proms, balls, or other social events.

EXCEPTION TO THE ABSENCE POLICY - School Music Events. All mandatory school music performances, such as concerts, special events, and in some cases playing in the pit orchestra, take precedence over ESYO commitments.

Consequences. ESYO recognizes that critical school or family events may conflict with rehearsals and that illnesses occur. Compliance with ESYO's school music participation policy may also cause students to miss rehearsals. Incurring more than the allowed absences will result in a discussion with the conductor. Consequences for unexcused absences may result in a member not being allowed to perform in a concert, being reseated, or being dismissed from the ensemble. In certain circumstances, a fine may be levied to cover the cost of hiring a replacement musician.

CODE OF CONDUCT

Reasonable standards of behavior and dress are expected while rehearsing, performing, or participating in any event or activity associated with ESYO. No set of rules can cover every possible situation. The list below, along with common courtesy and respect, offers a guide to appropriate behavior.

General behavior

- Demonstrate appropriate, respectful, and safe behavior with ESYO staff, sectional coaches, and fellow students
- Put trash in the appropriate containers. Please help keep our rehearsal spaces clean!
- Members are responsible for their own instruments. Do not leave instruments or bows unattended where they might be damaged accidentally. Do not leave your instrument on your chair during breaks. Instruments should be safely put into cases during breaks or when not needed. All instruments should be insured; most homeowner or renter's insurance policies can include a rider to cover instrument insurance
- The use of tobacco, alcohol or any illegal substances is strictly forbidden in and around program sites at all times. Also, students are forbidden from vaping or bringing a weapon of any kind (e.g. knife, firearm) to a program site. Violations of this policy are grounds for suspension or expulsion.

Rehearsal etiquette

- Cell phones and other electronic devices are to be turned off during rehearsals!
- Restroom usage: Please use the restrooms before the rehearsal or at the break. Students may not leave the rehearsal for any reason (other than for absolute emergencies) while it is in progress.
- Please do not bring food or drink into rehearsal spaces. A water bottle is the only exception.
- Listen carefully to instructions from your conductor, teaching artist, or manager. Do not talk while your conductor, teaching artist, or manager is speaking.
- Talk among musicians should be kept to a minimum, and should deal directly with issues related to the music at hand.
- Books, homework, and other off-task materials are not to be brought into the rehearsal area – being attentive and engaged even when you are not playing is an important part of being in an ensemble. You will learn important things about the music and how to improve your skills by observing your colleagues rehearsing.

Bullying and Harassment Policy

ESYO strives to provide a safe, secure, and respectful environment for all students. Bullying has a harmful social, physical, psychological, and academic impact on bullies, victims, and bystanders. Therefore, ESYO has defined an explicit policy banning bullying at its program sites and at any ESYO sponsored activity.

- Bullying is deliberate or intentional behavior using words or actions, intended to cause fear, humiliation, intimidation, harm, or social exclusion.
- Bullying may be repeated behavior and involves an imbalance of power. The behavior may be motivated by an actual or perceived distinguishing characteristic, such as, but not limited to: age; national origin; race; ethnicity; religion; gender; gender identity; sexual orientation; physical attributes; physical or mental ability or disability; and social, economic, or family status.
- Bullying behavior can be: 1. Physical (e.g. assault, hitting or punching, kicking, theft, threatening behavior) 2. Verbal (e.g. threatening or intimidating language, teasing or name-calling, racist remarks) 3. Indirect (e.g. spreading cruel rumors, intimidation through gestures, social exclusion and sending insulting messages or pictures by mobile phone or using the internet – also known as cyber-bullying)

Youth or adults in ESYO experiencing or observing such behavior should report it immediately. Incident reports are confidential and can be completed online at esyo.org/member/report-it. We take reports of such behavior seriously. All reports will be investigated to ensure that ESYO continues to be a safe learning environment.

Consequences for Code of Conduct Violations

Consequences may include (but are not limited to):

- Being placed on immediate suspension by the musician's manager or conductor;
- Dismissal for the remainder of the season;
- Not being allowed to audition for the upcoming season.

Decisions about consequences may be appealed to the Review Committee of the ESYO Board of Directors. In the case of suspension or dismissal, the musician/family is still responsible for the payment of any outstanding tuition to ESYO.

MUSIC DISTRIBUTION & COLLECTION

Music for Symphony, Repertory, String, Jazz, and Wind Orchestra members will be available to download via your ensemble's Google Classroom in August. Members will receive a notification as soon as their music is posted, and are expected to begin preparing their parts prior to the start of the season. All other members will receive their music at their first rehearsal in September.

Music folders are provided to each ESYO musician, courtesy of John Keal Music. It is the musician's responsibility to take good care of their music.

Music will be collected at the end of each concert period per the instructions of the manager or conductor.

PART ASSIGNMENTS FOR BRASS & WOODWINDS

Symphony & Repertory Orchestras: Brass and woodwind players will be heard by their conductors in the late summer before the first rehearsal. Part assignments are made after these sessions.

Wind Orchestra: Brass and woodwind players will be heard by their conductor in September to determine part assignments. Players will be recorded mid-season for their conductor to evaluate seating assignments.

PART ASSIGNMENTS FOR PERCUSSION

Symphony & Repertory Orchestras: Principal timpani and principal percussion seats are assigned based on the results of June auditions.

STRING SEATING ASSIGNMENTS & PREPAREDNESS REVIEWS

All seating is at the discretion of the conductor, who will seat players in an order that will result in a strong and balanced section. With the exception of principal seats, a player's seat assignment may be in the front, middle, or back, regardless of the musician's ability or performance during the preparedness review.

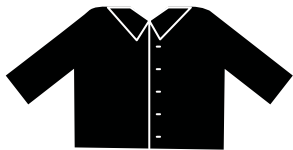
Symphony, Repertory, and String Orchestra string players will participate in Preparedness Reviews throughout the season. These reviews are held to ensure each player is adequately prepared to perform at the concert, and to identify any challenges a player might be experiencing. If a member is not adequately prepared, they will be asked to play for their conductor at a subsequent rehearsal, and in certain cases, may not be permitted to perform in the concert. Receiving a poor Preparedness Review more than once may jeopardize a member's continued participation in ESYO.

CONCERT DRESS

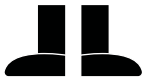
Concert attire should reflect the formal performance atmosphere, and follow the specifications detailed below. Please be sure to prepare your concert clothing well in advance to avoid being improperly attired for the performance.

SYMPHONY & REPERTORY ORCHESTRAS, JAZZ ORCHESTRAS, AND PERCUSSION ENSEMBLES

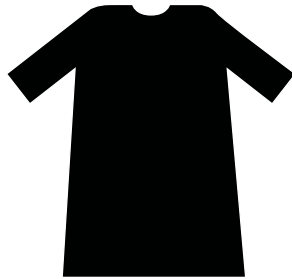
All students wear all black.



Long-sleeve (at least 3/4 length), solid black dress shirt with collar



Solid (opaque) black stockings, tights, or black socks, and black dress shoes (flats or low heel)



Ankle or floor-length, long-sleeved black dress



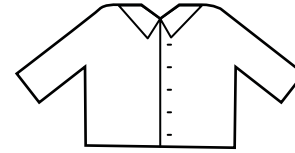
Ankle or floor-length black skirt



Black dress pant

WIND ORCHESTRA, STRING ORCHESTRA, CONCERTINO STRINGS

All students wear black and white.



White blouse or dress shirt



Ankle or floor-length black skirt



Solid (opaque) black stockings, tights, or black socks, and black dress shoes (flats or low heel)

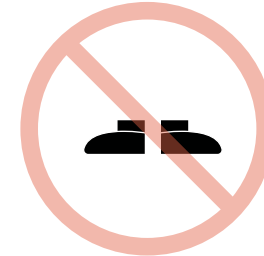


Long black dress pant

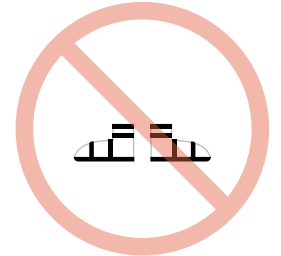
WHAT NOT TO WEAR



Leggings, jeggings, jeans, or other casual fitted pants or active wear



Socks or tights shorter than mid-calf height, and/or bare legs or feet



Open toe shoes or sandals

CONTACTS & COMMUNICATION

ADMINISTRATIVE OFFICE

Office Phone Number: 518.382.7581

Rebecca Calos
Executive Director
rcalos@esyo.org

Lisa Stulmaker
Finance Director
lstulmaker@esyo.org

Sue Lascoe
*Operations Director & Repertory
Orchestra Manager*
slascoe@esyo.org

Andrea Restrepo
*Operations Assistant, Symphony
Orchestra and String Orchestra
Manager, & Librarian*
arestrepo@esyo.org

Anne-Marie Gorman Doyle
Development Director
amgormandoyle@esyo.org

Justin Cook
Marketing & Publications Manager
jcook@esyo.org

Zoë Auerbach
*CHIME and Young Leaders
Program Manager*
zauerbach@esyo.org

David Bebe
Education Director
dbebe@esyo.org

Sam Herman
Admin Assistant and Brand Manager
sherman@esyo.org

CONDUCTORS & ORCHESTRA MANAGERS

Symphony Orchestra
Andrea Restrepo
Manager
arestrepo@esyo.org

Repertory Orchestra
David Beck
Conductor
dbeck@esyo.org
Sue Lascoe
Manager
slascoe@esyo.org

String Orchestra
Joseph Gumpper
Conductor
jgumpper@esyo.org
Andrea Restrepo
Manager
arestrepo@esyo.org

Wind Orchestra
Bob Hansbrough
Conductor
bhansbrough@esyo.org
Parent Manager
esyowinds@esyo.org

Jazz Orchestras
Peter Bellino
Conductor
pbellino@esyo.org
Keith Pray
Conductor
kpray@esyo.org
Manager
jazz@esyo.org

Youth Percussion Ensemble*
Richard Albagli
Conductor
ralbagli@esyo.edu
Mark Foster
Conductor
mfooster@esyo.com

Chamber Percussion Ensemble*
Genoveffa Vitale
Conductor
gvitale@esyo.org
John Antonio
Conductor
jantonio@esyo.org

Concertino Strings
Leo Milman
Conductor
lmilman@esyo.org
Manager
concertinostings@esyo.org

***Beth Antonio**
Percussion Ensembles Coordinator
bantonio@esyo.org

EMAIL

Email is our primary means of communication. Please be sure that ESYO has your most current email address, and **please do not unsubscribe!** ESYO emails will contain information pertinent to your specific ensemble, newsworthy notes and updates, as well as information from other arts organizations including offers of discounts/free tickets. If you are not receiving regular emails, contact your ensemble manager or email Justin Cook, Marketing & Publications Manager, at jcook@esyo.org.

GOOGLE CLASSROOM

Google Classroom is the official virtual rehearsal room for ESYO. You will be registered in your ensemble's Google Classroom using the Gmail address from your registration form. Google Classroom is more than just a virtual rehearsal room, it is an important hub for all ESYO ensemble communication. Ensemble news, notes, schedules, and announcements will be published in your Google Classroom.

ESYO.ORG

Visit the member-only section of the website to download ensemble schedules, member newsletters, alerts, surveys, and required forms. The website is the best way to get access to the most up-to-date information 24/7.

TEXT MESSAGE NOTIFICATIONS

We request your cell number after acceptance into an ensemble along with your permission to communicate via text. This method of communication will only be used to get information out quickly to a large group of ESYO families (i.e. last minute cancellations, etc.). Please see the Consent Forms for additional information.

CARPPOOL LIST

Each fall, ESYO will provide upon request a carpool list to all musicians/parents and guardians in order to allow musicians and parents to communicate with each other to arrange carpools, plan chamber group or combo rehearsals, etc. You may choose to be included in the list upon completing the Consent Forms.

WHO TO CONTACT

ABSENCES, REHEARSAL & CONCERT SCHEDULES, CONCERT DRESS CODE

Ensemble	Email
Symphony Orchestra	arestrepo@esyo.org
Repertory Orchestra	slascoe@esyo.org
Wind Orchestra	esyowinds@esyo.org
String Orchestra	arestrepo@esyo.org
Jazz Orchestra	jazz@esyo.org
Youth Percussion Ensemble	ralbagli@esyo.org
Repertory Percussion Ensemble	jantonio@esyo.org
Chamber Percussion Ensemble	gvitale@esyo.org
Concertino Strings	concertinostrings@esyo.org

REHEARSAL/CONCERT CANCELLATIONS

Rehearsal and concert cancellations due to weather or other emergencies will be posted on our website esyo.org, Google Classroom, our Facebook, and, if time permits, the School Closings Network carried by most television outlets in our region. You will also receive an email notification and text notification if you opt-in.

Please plan to stay home if driving conditions are unsafe where you live even if the rehearsal has not been cancelled. Simply notify your manager or conductor. *This will not be counted as an absence.*

TUITION/PAYMENT PLANS

For questions regarding tuition, payment plans, and financial assistance please contact Lisa Stulmaker, Finance Director, at lstulmaker@esyo.org or 518.382.7581.

REHEARSAL SCHEDULES

Detailed schedules for all ESYO ensembles for both rehearsals and concerts can be found [online](#). Please check your ensemble's schedule for conflicts and inform your manager and/or conductor about these conflicts as soon as possible.

REHEARSAL LOCATIONS AND TIMES

SYMPHONY ORCHESTRA

Wednesdays, 6:30 - 9:30pm
Brown School
150 Corlaer Ave, Schenectady, NY

REPERTORY ORCHESTRA

Tuesdays, 6:30 - 8:30pm
Brown School
150 Corlaer Ave, Schenectady, NY

WIND ORCHESTRA

Sundays, 2:00 - 3:15pm Woodwind Choir
Sundays, 3:15pm - 4:30pm Brass Choir
Massry Center, The College of Saint Rose, Albany, NY

STRING ORCHESTRA

Mondays, 6:30 - 8:30pm
Brown School
150 Corlaer Ave, Schenectady, NY

JAZZ ORCHESTRA

Mondays, 6:30 - 8:30pm,
The Addy, Proctors (3rd Floor)
432 State Street, Schenectady, NY

YOUTH PERCUSSION ENSEMBLE

Sundays, 3:00 - 5:00pm
Brown School
150 Corlaer Ave, Schenectady, NY

CHAMBER PERCUSSION ENSEMBLE

Sundays, 5:00 - 7:00pm
Brown School
150 Corlaer Ave, Schenectady, NY

CONCERTINO STRINGS

Sundays, 4:30 - 6:00pm
The Addy, Proctors (3rd Floor)
432 State Street, Schenectady, NY

ADDITIONAL INFORMATION FOR ESYO MEMBER FAMILIES

TUITION RATES

Rates published here are for the 2021-2022 season. Please read the following, and then for all tuition related questions, please contact Lisa Stulmaker, Finance Director, at lstulmaker@esy.org.

Ensemble	Rate
Symphony Orchestra	\$1070*
Repertory Orchestra	\$770
Wind Orchestra	\$690
String Orchestra	\$690
Jazz Orchestras	\$640
Youth Percussion Ensemble	\$740
Repertory Percussion Ensemble	\$740
Chamber Percussion Ensemble	\$720
Concertino Strings	\$570

**Includes performance at Carnegie Hall*

All tuition includes a \$200 non-refundable commitment deposit.

DISCOUNTS

A discount of \$50 per tuition is available for multiple tuitions in one family (e.g., more than one musician in ESYO) OR membership by one musician in two or more ensembles.

PAYMENT PLANS & TUITION ASSISTANCE

ESYO is committed to ensuring that all musicians who successfully audition for an ensemble are able to participate, regardless of financial considerations. Payment plans are available. Musicians may apply for need-based tuition assistance by completing and submitting an application. Applications are due by July 26, and are available online at esyo.org/members/financial-assistance-policy.

ESYO gratefully acknowledges the contributions of the Alfred Z. Solomon Charitable Foundation, the Suzanne D. Lake Scholarship Fund, The Harmony in Music Scholarship established by the Kolodziej and Resta Family, The Helen Cha-Pyo Baton & Scholarship Fund, The Accelerator Scholarships, Barry Richman Careers in Music Scholarship, and the Richard Albagli Scholarship Fund, that support our 2021 tuition assistance awards.

PAYMENT PLAN OPTIONS

Option A: 1 Payment Plan

Balance of all tuition paid in full at time of registration.

Payment Options: check, ACH, credit card*

Option B: 2 Payment Plan

50% paid at registration and 50% paid in January. An invoice will be sent at the beginning of January.

Payment Options: check, ACH, credit card*

Option C: 10 Payment Plan

10% paid each month August - May. An automatic payment must be set up with Lisa Stulmaker to complete your registration. Please note that there is a \$25 fee for the 10 Payment Plan option.

Payment Options: check, ACH, credit card*

* A 2.5% processing fee is associated with all credit card payments.

REFUND POLICY

If you have to resign from ESYO and withdraw from your ensemble, tuition will be refunded under the following policy.

If your tuition is paid in full:

Date of Withdrawal	Refund Amount
Before the first rehearsal	Full tuition paid less the \$200 commitment deposit
Before November 1	50% tuition paid less the \$200 commitment deposit
After November 1	No refund

If you are on an ESYO payment plan:

Date of Withdrawal	Refund amount
Before the first rehearsal	Full tuition paid to date less the \$200 commitment deposit
Before the first rehearsal and enrolled in a 10 month payment plan	No refund. Must pay the difference between the amount paid and the \$200 commitment deposit
After the first rehearsal	No refund

If you are suspended or dismissed from ESYO for any reason there is no refund.

AWARDED SCHOLARSHIPS

BARRY RICHMAN CAREERS IN MUSIC SCHOLARSHIP

ESTABLISHED BY ESYO FOUNDER BARRY RICHMAN

This scholarship is awarded at the end of each season to a graduating senior from any ESYO ensemble who best exemplifies the values and goals of ESYO, serves as role model to their peers, has made outstanding musical contributions, and plans a career in music. A recommendation from the applicant's music teacher is required. It is a \$1000 award. The winner is announced before the season ends. Application information will be announced in the spring.

THE HELEN CHA-PYO BATON AWARD

This \$1500 award is given each spring to a senior who embodies former Music Director Helen Cha-Pyo's passionate commitment to music as a means to uplift and enrich the community. Application information will be announced in the spring.

NEED-BASED FINANCIAL AID

ALFRED Z. SOLOMON SCHOLARSHIP FUND

The Alfred Z. Solomon Charitable Trust believes, as do we, that no one should be denied the opportunity to pursue a talent because of economic hardship. These scholarships help safeguard ESYO's longstanding commitment to grant any qualified musician the assistance they need to become a member.

SUZANNE D. LAKE SCHOLARSHIP

This scholarship honors Suzanne Lake's role as one of ESYO's founders, and her decades of service to young musicians. This need-based award favors a rising senior demonstrating a commitment to the serious pursuit of music.

THE HARMONY IN MUSIC SCHOLARSHIP *ESTABLISHED BY THE KOLODZIEJ AND RESTA FAMILY*

This scholarship supports the musical aspirations of talented young players who demonstrate financial need. In recognition of the challenge faced by larger families to afford enriching opportunities for all their children equally, this award favors applicants seeking to enroll more than one child in Empire State Youth Orchestra.

THE RICHARD ALBAGLI SCHOLARSHIPS *ESTABLISHED BY THE CHANG, HARRIS, AND PROVANCHER FAMILIES*

These scholarships honor Richard Albagli's more than thirty years of service to ESYO as percussion conductor, his deep commitment to music education and his compassion for others. These awards favor percussion applicants.

THE HELEN CHA-PYO SCHOLARSHIP FUND

This scholarship provides private music instruction and quality instruments for those musicians demonstrating financial need, specifically targeting CHIME students who have successfully matriculated into competitive ESYO performing groups, but require additional support to achieve at the highest level.

THE ACCELERATOR SCHOLARSHIPS

These need-based scholarships honor Roger Hannay's unwavering desire to help those in need who are also willing to help themselves. These awards favor returning ESYO musicians who have been accepted into a more advanced ensemble and who reflect Roger's grit, determination, and dedication to hard work.

CONCERT TICKETS & SPECIAL OFFERS

ACCESS ESYO | PAY WHAT YOU CAN

It has never been easier to get tickets to an ESYO performance. With Access ESYO you can purchase concert tickets for as little as \$1 per seat. With ESYO's online "pay what you can" ticketing system you can pay \$1, \$10, or \$20 per ticket. Whatever you decide to pay, we hope you will do your best to support our youths' performances!

PAY IT FORWARD

ACCESS ESYO is sustained through an ongoing "pay it forward" campaign. Consider paying it forward by making an additional donation to our ACCESS ESYO ticket bank. Your donation will provide a ticket to members of the community who may not be able to purchase a ticket to an ESYO performance.

BUILDING AUDIENCE

With ACCESS ESYO, there are no barriers to attending our concerts. Please invite your private music teacher, your school teacher, and your friends to attend your performances! Music Teachers are invited to call the ESYO office before the day of the concert for complimentary tickets.

PURCHASING TICKETS

The following methods are available for purchasing tickets to ESYO produced concerts:

- Online at esyo.org/tickets
- By phone at 518-382-7581
- In person at ESYO's Administrative Office, 432 State Street (Proctors) M-Th 10am-3pm
- In person at the concert venue beginning one hour prior to performances

In addition to the above options, tickets to ESYO concerts at the Troy Savings Bank Music Hall are available for purchase at their box office at 30 2nd Street, Troy.

RESTRICTIONS

ACCESS ESYO tickets are not available for non-ESYO produced events, such as Melodies of Christmas.

TICKETS FOR MELODIES CONCERTS

Advance ticket sales for the Melodies concerts are available only to Symphony Orchestra families (at rehearsals) and the Youth Chorale (at the Proctors Box Office) during the month of October prior to a general release. Information about advance sales is posted in the rehearsal newsletter.

SUPPORTING YOUR CHILD'S PARTICIPATION IN ESYO

For students to benefit from everything ESYO offers, we need you to assist with your children's participation in the following ways:

- Read all emails and materials from ESYO. Respond in a timely manner when requested;
- Plan for your family to attend each of your child's ESYO concerts;
- Ensure prompt arrival at rehearsals and concerts and pick-up at the end.
 - › Students should arrive only 10 minutes prior to the published start time for rehearsals.
 - › Students must be picked up directly following the end of a rehearsal or performance
- Support full attendance of your child at all rehearsals and events by avoiding conflicts between family plans and ESYO activities whenever possible

- Support your child's private lessons, practice routine, and participation in school music activities
- Introduce people to ESYO, including parents of prospective students, and help grow our community by bringing friends to your child's concerts
- Speak to ESYO staff members regarding any concerns surrounding your child's participation. The sooner we are aware of your concerns, the better chance we have of resolving them successfully.

FUNDRAISING

ESYO is committed to providing accessible and affordable musical experiences for all qualified youth; as a result, tuition fees cover only 40% of the full cost of our programming. We actively fundraise and solicit funds from granting organizations to generate the remaining revenue we need to provide outstanding experiences for our musicians. We expect all ESYO families to participate in our fundraising efforts.

Ways families can participate:

- Contribute to our Annual Appeal;
- Advocate for ESYO: encourage others to attend performances or consider auditioning;
- Secure an Employer Match for your contribution;
- Inquire about volunteer opportunities with ESYO.

Playathon!

All of ESYO's performing groups participate in this day-long fundraising marathon at Crossgates Mall in February. Members are expected to raise at least \$150 in donations before the event through a variety of methods including peer-to-peer online fundraising. Instructions and information will be provided to each member four weeks prior to Playathon.

VOLUNTEERING

ESYO has a small, dedicated staff that works hard to meet all of the operational needs of our ensembles. With such a small staff we rely on the invaluable assistance of our amazing volunteers. We hope you will consider joining our Volunteer Team this season!

Throughout the year, we have many opportunities for volunteering. Lots of help is needed for Playathon, which involves all of our ensembles, and Melodies of Christmas, which involves only the Symphony Orchestra. Beyond that, we need parents to sell tickets "at the door," serve as parent liaisons (between conductor and parent), monitor halls during rehearsals, and help move larger instruments for concerts. We also frequently need your help to stuff envelopes, or pitch in at special events. We ask that you consider volunteering for at least one event per year. With that help, we can be sure and offer our musicians the best experience possible!

PARENT LIAISONS

Each ensemble has one or more parents who serve as volunteer Parent Liaisons. Duties of the liaison differ slightly between groups but, in general, involve coordinating volunteer activities that support the management of the group. For example, the liaison may arrange for a few parents to help backstage before a concert, sell concert tickets, or pass out programs. Liaisons for the larger groups work with the groups' managers; for the smaller groups, the liaisons work directly with the conductors.

HALL MONITORS

For some ESYO groups, parents are asked to monitor the halls outside the rehearsal spaces to ensure that noise levels are appropriate and that ESYO musicians do not wander into restricted areas of the rehearsal venue. For these groups, parents will be given an assignment early enough so that changes can easily be made if necessary.

BOX OFFICE VOLUNTEERS & CONCERT USHERS

Do you want to learn the ins and outs of working and running a box office? Do you enjoy greeting people and helping them find their seat? As ESYO returns to in-person concerts with live audiences, we need volunteers to work at select ESYO-sponsored performances.

- **Ticket Agents** - Provide friendly customer service to ESYO patrons and families. Sell tickets at dress rehearsals and at the door before ESYO-sponsored concerts. Reprint lost or misplaced tickets. Assist Marketing & Publications Manager and Administrative Assistant with the printing and mailing of tickets. Sell ESYO merchandise at all ESYO-sponsored concerts & events.
- **Concert Ushers** - Warmly welcome and greet all ESYO patrons and families as they enter the concert hall. Set up ESYO concert signage, distribute program books, and assist patrons with downloading the new digital program book, tear/scan ticket stubs, assist patrons with finding answers to questions, and help patrons find merchandise tables, restrooms, concession stands, etc.



esyjo EMPIRE STATE
YOUTH ORCHESTRA

ESYO.ORG | 518.3827581 | INFO@ESYO.ORG